

Derivatives Rollover report

July 2025

July 31, 2025

Index Snapshot

	July	June	Change
NIFTY	24771.9	25252.2	-1.94%
NIFTY FUT OI (No of shares Cr)	2.17	2.16	0.46%
NIFTY PCR OI	1	1.32	NA
BANKNIFTY	55988.80	57217.20	-2.19%
BANKNIFTY FUT OI (No of lakhs Cr)	25.07	27.98	-11.61%
BANK NIFTY PCR OI	0.91	0.98	NA

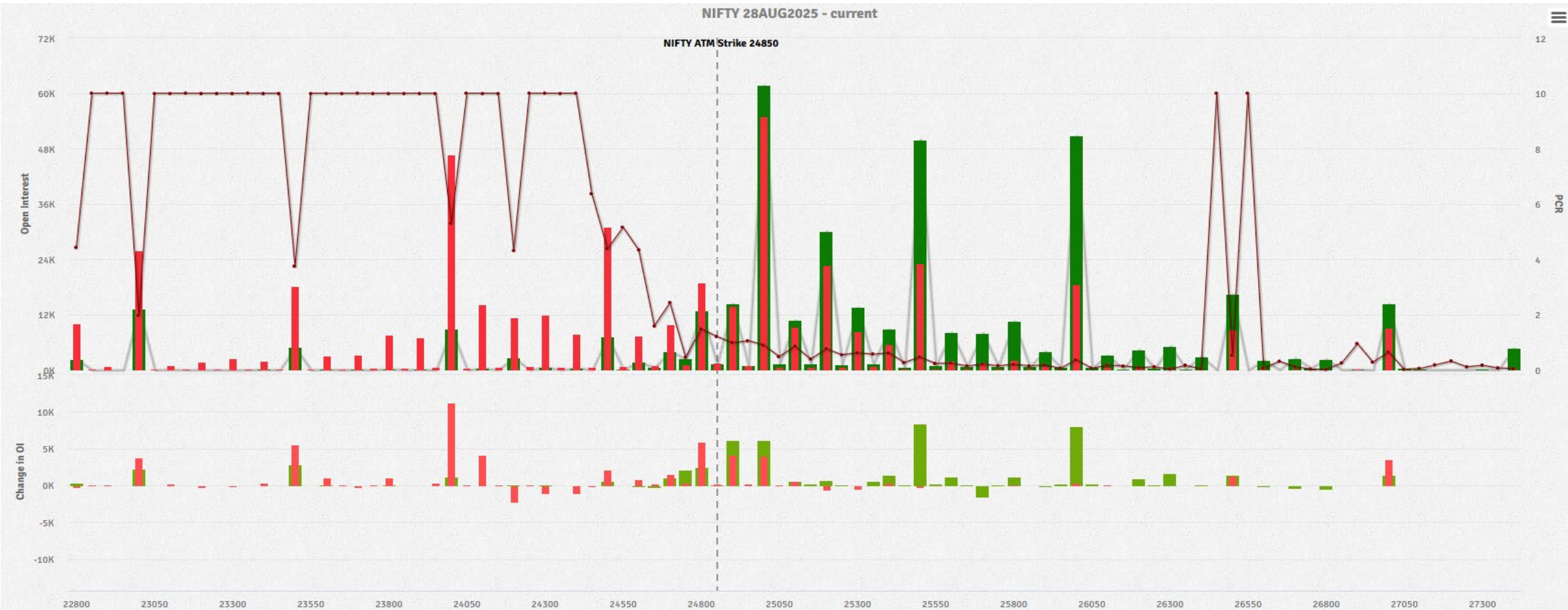
The Nifty ended the July contract with a negative return of 1.94% and witnessed volatile moves during the series. The Nifty's current PCR is at 1 indicating a neutral stance in the short term. The Bank Nifty also ended the July series down 2.19%. The Bank Nifty's PCR is trading at 0.91 again, indicating a neutral stance in the short term.

Index Rollover

Index	April	May	June	3M Avg	July	Cost
NIFTY	79.08%	79.10%	79.53%	79.24%	75.71%	0.42%
BANKNIFTY	75.05%	79.29%	75.75%	76.70%	77.98%	0.41%

The Nifty witnessed a 75.71% rollover in the next series which is lower than the three-month average, indicating many positions have been squared off in current expiry. The shorts are still placed in the system and once the Nifty surpasses the 20-DMA placed at 25120 will lead to sharp short covering moves. The Bank nifty index witnessed high rollover than the three-month average indicating bearish positions have been carried on to the next series. The index needs to surpass the mark of 57000 decisively to witness sharp short-covering moves towards a new all-time high.

Nifty OI Concentration (In lots) (Monthly Expiry)

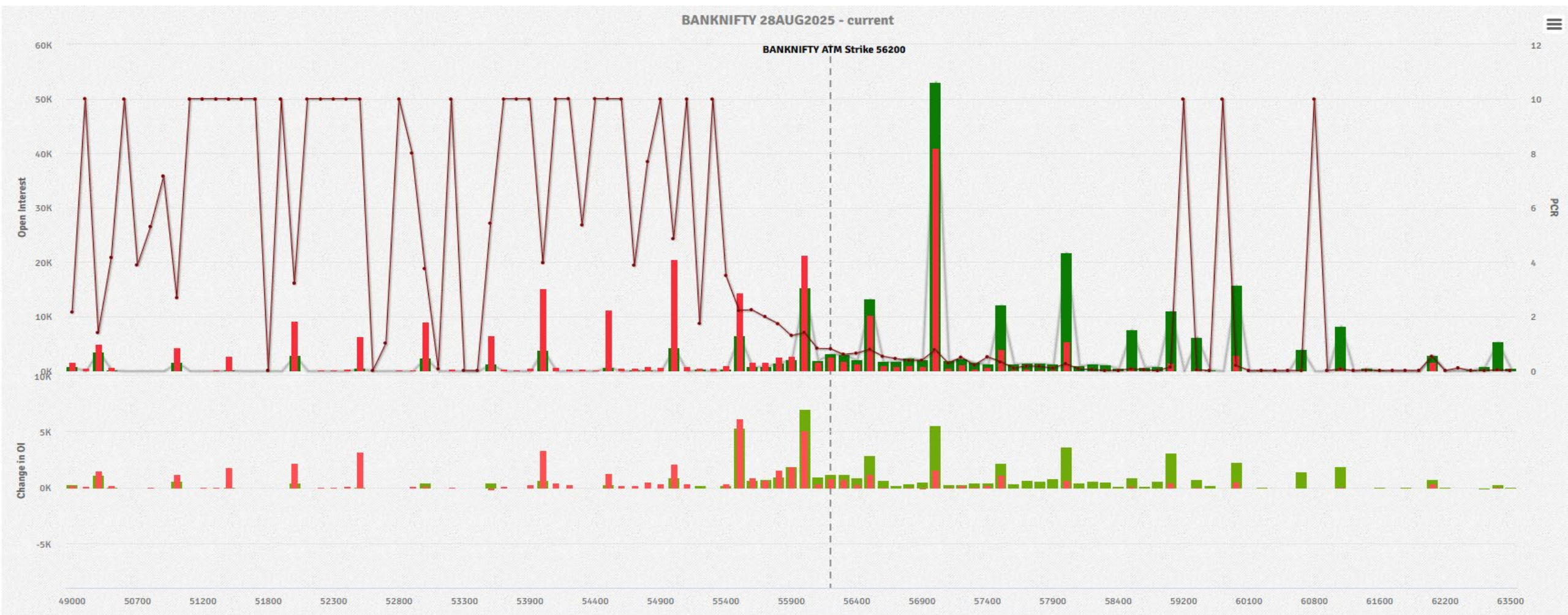


Highest open interest build-up (Monthly OI)

Nifty 25000 CE resistance.

Nifty 25000 PE support.

Bank Nifty OI Concentration (In lots) (Monthly Expiry)

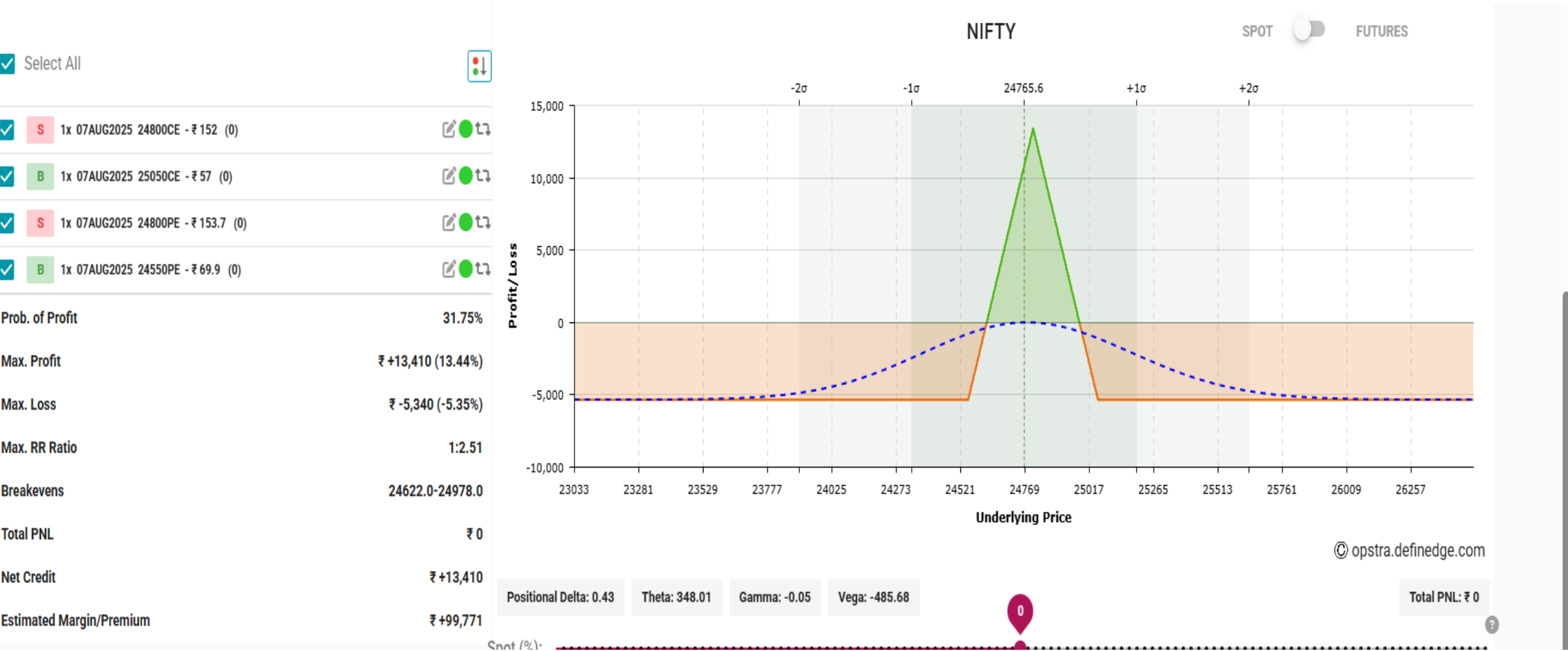


Highest open interest build up (Monthly OI)

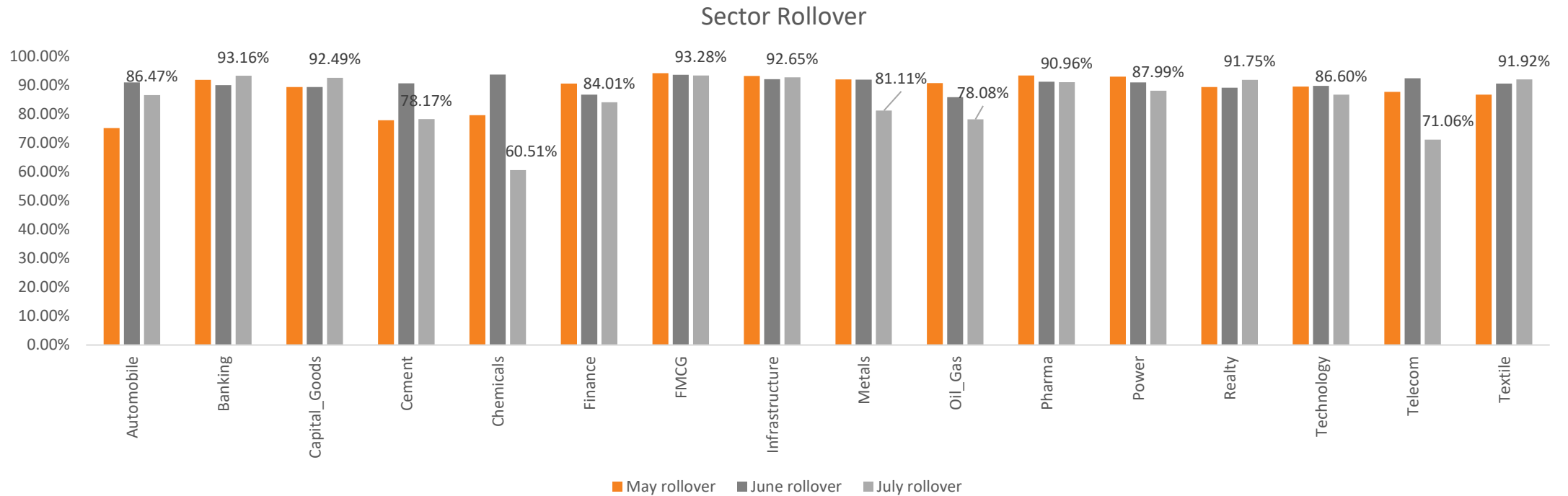
Bank Nifty 57000 CE

Bank Nifty 57000 PE

Nifty Strategy (Short iron fly)



Sector Rollover



High Rollover Sectors : Banking, Capital Goods and Realty.
Low Rollover Sector: Telecom, Cement Metals and Chemicals

Top 10 Highest and lowest rollover stocks

Highest rollover			Lowest rollover		
Stocks	Rollover	Cost	Stocks	Rollover	Cost
M&M	98.67%	12.5	MUTHOOTFIN	61.54%	7.7
CROMPTON	98.25%	1.85	JINDALSTEL	68.83%	0.75
ULTRACEMCO	98.18%	71	JSL	69.11%	1.6
HDFCBANK	98.12%	10.5	LAURUSLABS	70.00%	3.65
DIVISLAB	97.98%	28	IOC	71.39%	0.42
MARICO	97.97%	-4.55	INOXWIND	75.37%	0.79
MARUTI	97.71%	-57	IEX	77.14%	0.77
IDEA	97.48%	0.02	NHPC	77.45%	-0.01
LUPIN	97.27%	6	BPCL	78.22%	-0.85
INDHOTEL	97.12%	2.45	OIL	79.28%	0.8

Top Picks: MARICO , INDHOTEL , HDFCBANK and ULTRATECH

Stocks Rollover

Symbol	Rollover%	Basis	3months average
ABB	94.18%	15	94.39%
ABCAPITAL	96.11%	0.65	94.39%
ABFRL	93.90%	0.35	92.67%
ACC	0.00%	0	83.65%
ADANIENSOL	96.24%	3	92.69%
ADANIENT	93.89%	9.4	95.78%
ADANIGREEN	96.06%	3.5	94.15%
ADANIPORTS	94.21%	7.8	92.44%
ALKEM	94.64%	8.3	91.53%
AMBUJACEM	94.47%	1.95	91.88%
ANGELONE	84.02%	10.9	94.61%
APLAPOLLO	89.61%	-0.6	82.01%
APOLLOHOSP	93.17%	19.5	90.22%
ASHOKLEY	96.12%	0.7	88.03%
ASIANPAINT	90.62%	8.5	89.58%
ASTRAL	91.58%	7.4	88.00%
ATGL	82.27%	1.65	91.07%
AUBANK	95.95%	4.55	91.94%
AUROPHARMA	90.50%	6.1	88.56%
AXISBANK	96.73%	6	93.16%
BAJAJ-AUTO	92.52%	43	93.21%
BAJAJFINSV	94.24%	6.2	90.65%
BAJFINANCE	97.11%	2.75	88.28%
BALKRISIND	0.00%	0	92.03%
BANDHANBNK	96.45%	-0.56	93.25%
BANKBARODA	95.01%	1.15	91.49%
BANKINDIA	95.91%	0.51	90.99%
BANKNIFTY	77.98%	232.05	87.72%
BEL	93.44%	1.8	89.36%
BHARATFORG	94.94%	2.4	82.57%
BHARTIARTL	92.69%	7.4	92.57%
BHEL	93.48%	0.65	94.03%
BIOCON	92.78%	2.15	89.21%
BOSCHLTD	91.81%	110	85.46%
BPCL	78.22%	-0.85	89.72%

Symbol	Rollover%	basis	3months average
BRITANNIA	96.40%	-44	94.48%
BSE	87.50%	10.2	95.04%
BSOFT	0.00%	0	87.11%
CAMS	80.83%	11.3	84.40%
CANBK	87.02%	0.59	81.30%
CDSL	91.31%	-4.8	83.62%
CESC	92.85%	0.53	86.19%
CGPOWER	83.43%	2.5	92.38%
CHAMBLFERT	0.00%	0	90.84%
CHOLAFIN	94.67%	-16.4	92.45%
CIPLA	95.99%	6.2	91.34%
COALINDIA	87.78%	-5.65	91.64%
COFORGE	92.55%	4.4	92.19%
COLPAL	96.21%	12.7	92.42%
CONCOR	93.71%	1.2	89.97%
CROMPTON	98.25%	1.85	86.74%
CUMMINSIND	94.95%	20.1	89.92%
CYIENT	95.22%	6.6	95.87%
DABUR	94.52%	2.35	95.45%
DALBHARAT	84.94%	10.4	84.26%
DELHIVERY	95.96%	2.85	93.74%
DIVISLAB	97.98%	28	90.02%
DIXON	87.81%	49	90.51%
DLF	95.18%	3	84.67%
DMART	85.67%	-20.8	92.37%
DRREDDY	91.02%	4	87.40%
EICHERMOT	93.14%	-44	90.54%
ETERNAL	93.14%	1.9	80.42%
EXIDEIND	94.56%	1.4	94.19%
FEDERALBNK	91.75%	0.07	80.63%
FINNIFTY	74.25%	81.05	86.91%
GAIL	93.35%	-0.32	88.24%
GLENMARK	88.93%	11.2	90.78%
GMRAIRPORT	97.01%	0.53	89.21%
GODREJCP	82.53%	0.9	82.02%

Stocks Rollover

Symbol	Rollover%	basis	3months average
GODREJPROP	95.21%	6.4	80.59%
GRANULES	95.78%	1.9	81.55%
GRASIM	96.82%	6.4	93.74%
HAL	91.50%	2.6	96.07%
HAVELLS	93.94%	8.8	90.50%
HCLTECH	93.48%	8.3	95.15%
HDFCAMC	92.79%	-12.5	94.12%
HDFCBANK	98.12%	10.5	95.45%
HDFCLIFE	95.69%	4.5	94.54%
HEROMOTOCO	91.97%	-35.7	86.49%
HFCL	95.44%	0.52	89.74%
HINDALCO	95.10%	-2.85	92.87%
HINDCOPPER	0.00%	0	95.66%
HINDPETRO	85.13%	0	84.37%
HINDUNILVR	86.13%	11.3	88.18%
HINDZINC	91.12%	2.65	93.84%
HUDCO	91.95%	-0.12	93.95%
ICICIBANK	96.08%	-4	94.80%
ICICIGI	90.89%	11.2	91.90%
ICICIPRULI	91.43%	2.35	94.23%
IDEA	97.48%	0.02	90.26%
IDFCFIRSTB	96.38%	0.39	91.27%
IEX	77.14%	0.77	93.55%
IGL	92.63%	-1.15	91.81%
IIFL	95.99%	0.75	95.05%
INDHOTEL	97.12%	2.45	94.47%
INDIANB	95.69%	0.9	95.14%
INDIGO	92.78%	-30	93.02%
INDUSINDBK	94.87%	4.8	77.25%
INDUSTOWER	94.08%	1.2	88.06%
INFY	90.61%	6	86.05%
INOXWIND	75.37%	0.79	86.99%
IOC	71.39%	0.42	90.65%
IRB	93.60%	0.2	91.97%
IRCTC	92.27%	2.25	91.97%

Symbol	Rollover%	basis	3months average
IREDA	91.83%	0.29	92.47%
IRFC	88.94%	0.1	92.91%
ITC	95.73%	1.2	92.94%
JINDALSTEL	68.83%	0.75	81.81%
JIOFIN	96.22%	1.65	94.06%
JSL	69.11%	1.6	94.44%
JSWENERGY	90.85%	2.75	82.99%
JSWSTEEL	94.34%	4.5	84.04%
JUBLFOOD	96.35%	2.45	93.51%
KALYANKJIL	92.56%	2	85.81%
KEI	80.75%	22.6	94.08%
KOTAKBANK	89.98%	11.7	93.57%
KPITTECH	90.33%	2.5	96.91%
LAURUSLABS	70.00%	3.65	97.74%
LICHSGFIN	84.10%	-4.2	93.79%
LICI	83.44%	3.5	92.88%
LODHA	87.98%	3.6	79.05%
LT	88.89%	14	89.67%
LTF	94.45%	1.09	88.59%
LTIM	95.40%	3	88.72%
LUPIN	97.27%	6	95.00%
M&M	98.67%	12.5	92.87%
M&MFIN	0.00%	0	83.14%
MANAPPURAM	88.49%	1.35	86.60%
MARICO	97.97%	-4.55	94.25%
MARUTI	97.71%	-57	90.51%
MAXHEALTH	87.51%	5.5	87.27%
MCX	87.59%	4.5	92.05%
MFSL	85.01%	5.6	90.39%
MGL	0.00%	0	93.57%
MIDCPNIFTY	85.14%	53.55	83.56%
MOTHERSON	94.47%	0.51	91.42%
MPHASIS	88.88%	8.8	90.36%
MUTHOOTFIN	61.54%	7.7	87.09%
NATIONALUM	94.79%	0.84	87.23%

Stocks Rollover

Symbol	Rollover%	basis	3months average
NAUKRI	93.29%	6.8	83.66%
NBCC	87.76%	0.49	87.07%
NCC	91.41%	-0.45	87.89%
NESTLEIND	94.64%	10.1	91.79%
NHPC	77.45%	-0.01	91.27%
NIFTY	75.71%	103.25	88.84%
NIFTYNXT50	84.53%	132.05	83.32%
NMDC	87.78%	-0.75	92.70%
NTPC	95.81%	1.55	88.96%
NYKAA	88.66%	0.76	88.41%
OBEROIRLTY	89.44%	9.3	90.99%
OFSS	90.39%	32.5	92.02%
OIL	79.28%	0.8	85.40%
ONGC	88.53%	-0.01	84.11%
PAGEIND	88.72%	-2,665.00	84.99%
PATANJALI	89.83%	7.4	90.47%
PAYTM	90.20%	3.75	89.28%
PEL	0.00%	0	83.02%
PERSISTENT	87.80%	17	85.51%
PETRONET	92.76%	1.6	89.65%
PFC	88.79%	-1	87.58%
PHOENIXLTD	86.22%	6.9	86.89%
PIDILITIND	94.97%	15.8	88.49%
PIIND	96.57%	4.1	94.80%
PNB	92.32%	0.34	96.01%
PNBHOUSING	89.65%	0	87.02%
POLICYBZR	93.70%	7.9	85.93%
POLYCAB	92.94%	16	96.23%
POONAWALLA	82.03%	1.7	93.91%
POWERGRID	89.11%	0.9	88.08%
PRESTIGE	94.92%	3.1	94.94%
RBLBANK	93.30%	1.6	89.30%
RECLTD	95.83%	-5.1	93.68%
RELIANCE	95.36%	3.7	88.58%
SAIL	95.13%	0.2	90.24%

Symbol	Rollover%	basis	3months average
SBICARD	91.56%	1.5	90.18%
SBILIFE	94.42%	8.9	93.08%
SBIN	92.24%	4.55	83.26%
SHREECEM	94.60%	70	92.50%
SHRIRAMFIN	96.02%	3.4	90.57%
SIEMENS	93.25%	11.2	90.57%
SJVN	85.84%	0.41	93.47%
SOLARINDS	86.40%	22	90.29%
SONACOMS	86.91%	1.6	93.94%
SRF	96.16%	11.2	86.89%
SUNPHARMA	86.71%	7.2	83.81%
SUPREMEIND	93.09%	16.6	81.02%
SYNGENE	95.24%	2.5	90.24%
TATACHEM	88.38%	4	92.01%
TATACOMM	0.00%	0	78.24%
TATACONSUM	96.71%	3.2	92.89%
TATAELXSI	96.08%	-84	89.87%
TATAMOTORS	95.07%	2.45	94.95%
TATAPOWER	96.58%	1.95	93.50%
TATASTEEL	87.04%	0.48	90.82%
TATATECH	95.26%	3.75	90.52%
TCS	92.03%	15.1	94.17%
TECHM	89.35%	5.7	88.00%
TIINDIA	92.06%	12	92.81%
TITAGARH	93.93%	4.55	90.11%
TITAN	95.11%	11.8	87.00%
TORNTPHARM	84.96%	12.5	92.91%
TORNTPOWER	94.41%	7.8	89.87%
TRENT	88.88%	22.5	92.69%
TVSMOTOR	83.48%	4.3	93.37%
ULTRACEMCO	98.18%	71	87.62%
UNIONBANK	81.07%	0.67	92.61%
UNITDSPR	94.87%	-2.2	91.49%
UPL	91.72%	3.75	85.57%
VBL	90.69%	1.3	88.94%

Symbol	Rollover%	basis	3months average
VEDL	93.74%	0.95	90.10%
VOLTAS	85.91%	-13.2	97.59%
WIPRO	92.84%	-0.05	94.12%
YESBANK	87.95%	0.11	92.08%
ZYDUSLIFE	94.98%	3	93.37%

Disclaimer

This information/document has been prepared by Sharekhan Ltd. (SHAREKHAN) and is intended for use only by the person or entity to which it is addressed to. This Document may contain confidential and/or privileged material and is not for any type of circulation and any review, retransmission, or any other use is strictly prohibited. This information/ document is subject to changes without prior notice.

Recommendation in reports based on technical and derivatives analysis is based on studying charts of a stock's price movement, trading volume, outstanding positions, as opposed to focusing on a company's fundamentals and as such, may not match with a report on a company's fundamentals. However, this would only apply for information/document focused on technical and derivatives research and shall not apply to reports/documents/information focused on fundamental research.

This information/document does not constitute an offer to sell or solicitation for the purchase or sale of any financial instrument or as an official confirmation of any transaction. Though disseminated to all customers who are due to receive the same, not all customers may receive this report at the same time. SHAREKHAN will not treat recipients as customers by virtue of their receiving this information/report.

The information contained herein is obtained from publicly available data or other sources believed to be reliable and SHAREKHAN has not independently verified the accuracy and completeness of the said data and hence it should not be relied upon as such. While we would endeavour to update the information herein on reasonable basis, SHAREKHAN, its subsidiaries and associated companies, their directors and employees ("SHAREKHAN and affiliates") are under no obligation to update or keep the information current. Also, there may be regulatory, compliance, or other reasons that may prevent SHAREKHAN and affiliates from doing so. This document is prepared for assistance only and is not intended to be and must not alone be taken as the basis for an investment decision. Recipients of this report should also be aware that past performance is not necessarily a guide to future performance and value of investments can go down as well. The user assumes the entire risk of any use made of this information. Each recipient of this document should make such investigations as it deems necessary to arrive at an independent evaluation of an investment in the securities of companies referred to in this document (including the merits and risks involved) and should consult its own advisors to determine the merits and risks of such an investment. The investment discussed or views expressed may not be suitable for all investors. We do not undertake to advise you as to any change of our views. Affiliates of Sharekhan may have issued other recommendations/ reports that are inconsistent with and reach different conclusions from the information presented in this recommendations/report.

This information/recommendation/report is not directed or intended for distribution to, or use by, any person or entity who is a citizen or resident of or located in any locality, state, country or other jurisdiction, where such distribution, publication, availability or use would be contrary to law, regulation or which would subject SHAREKHAN and affiliates to any registration or licensing requirement within such jurisdiction. The securities described herein may or may not be eligible for sale in all jurisdictions or to certain category of investors. Persons in whose possession this document may come are required to inform themselves of and to observe such restriction.

The analyst certifies that the analyst might have dealt or traded directly or indirectly in securities of the company and that all the views expressed in this document accurately reflect his or her personal views about the subject company or companies and its or their securities and do not necessarily reflect those of SHAREKHAN. The analyst and SHAREKHAN further certifies that either he or his relatives or Sharekhan associates might have direct or indirect financial interest or might have actual or beneficial ownership of 1% or more in the securities of the company at the end of the month immediately preceding the date of publication of the research report. The analyst and SHAREKHAN encourages independence in research report/ material preparation and strives to minimize conflict in preparation of research report. The analyst and SHAREKHAN does not have any material conflict of interest or has not served as officer, director or employee or engaged in market making activity of the company. The analyst and SHAREKHAN has not been a part of the team which has managed or co-managed the public offerings of the company, and no part of the analyst's compensation was, is or will be, directly or indirectly related to specific recommendations or views expressed in this document. Sharekhan Ltd or its associates or analysts have not received any compensation for investment banking, merchant banking, brokerage services or any compensation or other benefits from the subject company or from third party in the past twelve months in connection with the research report.

Either SHAREKHAN or its affiliates or its directors or employees / representatives / clients or their relatives may have position(s), make market, act as principal or engage in transactions of purchase or sell of securities, from time to time or may be materially interested in any of the securities or related securities referred to in this report and they may have used the information set forth herein before publication. SHAREKHAN may from time to time solicit from, or perform investment banking, or other services for, any company mentioned herein. Without limiting any of the foregoing, in no event shall SHAREKHAN, any of its affiliates or any third party involved in, or related to, computing or compiling the information have any liability for any damages of any kind.

Forward-looking statements (if any) are provided to allow potential investors the opportunity to understand management's beliefs and opinions in respect of the future so that they may use such beliefs and opinions as one factor in evaluating an investment. These statements are not a guarantee of future performance and undue reliance should not be placed on them. Such forward-looking statements necessarily involve known and unknown risks and uncertainties, which may cause actual performance and financial results in future periods to differ materially from any projections of future performance or result expressed or implied by such forward-looking statements. Sharekhan/its affiliates undertakes no obligation to update forward-looking statements if circumstances or management's estimates or opinions should change except as required by applicable securities laws. The reader/investors are cautioned not to place undue reliance on forward-looking statements and use their independent judgement before taking any investment decision.

Investment in securities market are subject to market risks, read all the related documents carefully before investing. The securities quoted are for illustration only and are not recommendatory. Registration granted by SEBI, and certification from NISM in no way guarantee performance of the intermediary or provide any assurance of returns to investors.

Client should read the Risk Disclosure Document issued by SEBI & relevant exchanges and the T&C on www.sharekhan.com

Registered Office: 1st Floor, Tower No. 3, Equinox Business Park, LBS Marg, Off BKC, Kurla (West), Mumbai 400 070, Maharashtra, India. Tel: 022-67502000. **Correspondence/Administrative Office Address** - Gigaplex IT Park, Unit No 1001, 10th floor, Building No.9, TTC Industrial Area, Digha, Airoli-West, Navi Mumbai – 400708. Tel: 022 61169000 / 61150000. **Registration and Contact Details:** Name of Research Analyst - Sharekhan Limited - (AMFI-registered Mutual Fund Distributor), Research Analyst Regn No.: INH000006183. CIN: U99999MH1995PLC087498. SEBI Regn. Nos.: BSE / NSE (CASH / F&O / CD) / MCX - Commodity: INZ000171337; BSE – 748, NSE – 10733, MCX – 56125, DP: NSDL/CDSL-IN-DP-365-2018; PMS: INP000005786; Mutual Fund: ARN 20669 (date of initial registration: 03/07/2004, and valid till 02/07/2026); IRDAI Registered Corporate Agent (Composite) License No. CA0950, valid till June 13, 2027. **Compliance Officer:** Mr. Joby John Meledan; Tel: 022-4657 3809; email id: complianceofficer@sharekhan.com

For any complaints/ grievances, email us at igc@sharekhan.com, or you may even call the Customer Service desk on 022-41523200/ 022-61151111.

For any complaints/grievance, email us at igc@sharekhan.com or you may even call Customer Service desk on - 022- 41523200/022-69920600.