

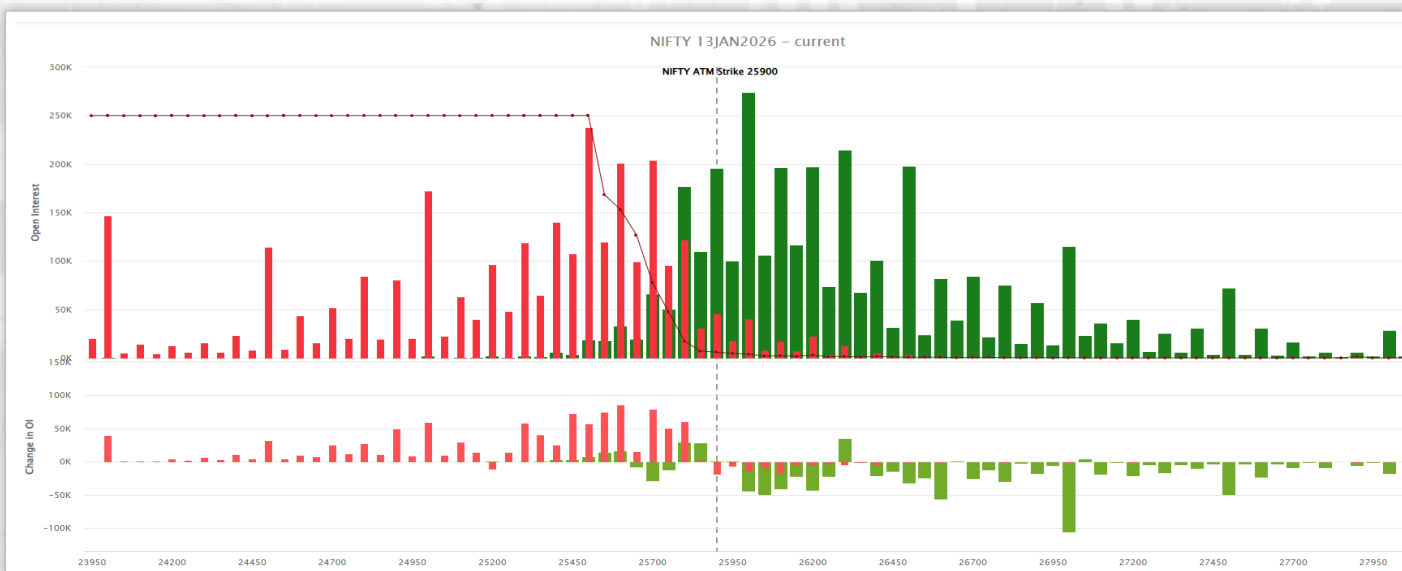
# Eagle Eye Equities

January 13, 2026

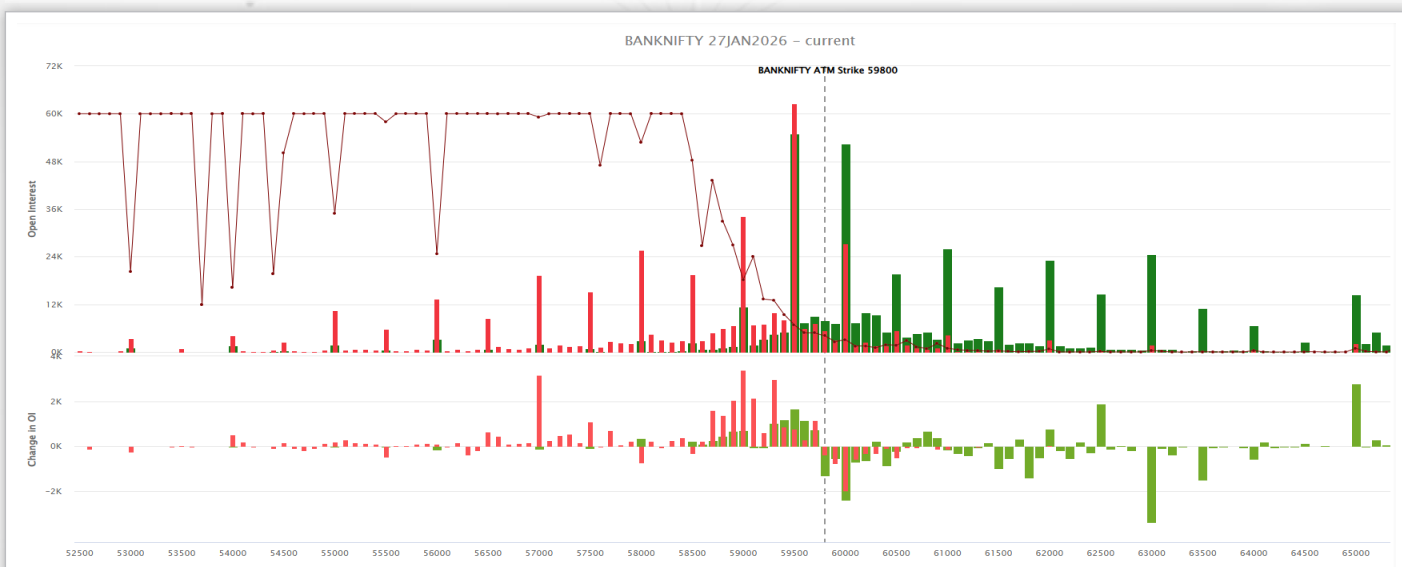
## Technical Picks (Timeframe: 1 - 5 days)

Stocks	CMP (Rs)	Action	Stoploss	Target 1	Target 2
INDUSINDBK	907	BUY	875	945	960
BSE	2795	BUY	2685	2900	2960

## Nifty OI Concentration



## Bank Nifty OI Concentration



## Punter's Call

## Pullback moves

January 12, 2026

The Nifty opened on a flat note and saw a volatile moves on both sides. The first half belonged to the bears while the second half witnessed short covering moves due to the positive tariff news. The index remains in a sell on rise till the time it is trading below the 20-DMA placed at 26000, where the highest open interest is built up on the call side. The Bank Nifty was able to hold the make-or-break level of 58700 and witnessed a smart recovery from the lows. The strong index stands at 60000 where the highest open interest is built up on the call side. The market breadth remains negative in favour of declines.

## Other technical observations

On the daily chart, the Nifty is trading below the 20-day moving average (DMA) and the 40-DEMA of 26021 and 25947 respectively. The momentum indicator has a negative crossover on the daily chart.

On the hourly chart, Nifty is trading between the 20-hour moving average (HMA) and the 40-HEMA of 25769 and 25899 respectively. The momentum indicator has a negative crossover on the hourly charts. The market breadth was negative with 1250 advances and 1894 declines on the National Stock Exchange.

Nifty daily: 25,790



60-minute



## Market breadth

	BSE	NSE
Todays Close	83878	25790
Advances	1870	1250
Decline	2831	1894
Unchanged	272	117
Volume (Rs. in Cr)	8000.07	1,03,359.86

## Looking Trendy: Nifty

## Short Term Trend

Index	Target	Trend	Reversal	Support / Resistance
Nifty	25300	↓	26100	25300/26100

NOTE: Reversal on closing basis

## Medium Term Trend

Index	Target	Trend	Reversal	Support / Resistance
Nifty	26800	↑	25300	25300/26800

NOTE: Reversal on closing basis

## Looking Trendy: Sensex

## Short Term Trend

Index	Target	Trend	Reversal	Support / Resistance
Sensex	82000	↓	85200	82000/85200

NOTE: Reversal on closing basis

## Medium Term Trend

Index	Target	Trend	Reversal	Support / Resistance
Sensex	87500	↑	75500	75500/87500

NOTE: Reversal on closing basis

## Looking Trendy: Bank Nifty

## Short Term Trend

Index	Lower Boundry	Trend	Upper Boundry	Support / Resistance
Bank Nifty	58700	↔	60100	58700/60100

NOTE: Reversal on closing basis

## Medium Term Trend

Index	Target	Trend	Reversal	Support / Resistance
Bank Nifty	61000	↑	55000	55000/61000

NOTE: Reversal on closing basis

## Icon guide

↑ Up	↓ Down	↔ Sideways	↘ Downswing matures	↗ Upswing matures
------	--------	------------	---------------------	-------------------

## Nifty Trader

Support	Resistance
25670	25911
25549	26031
25429	26152
20 DSMA	40 DEMA
26021	25947

## Sensex

Support	Resistance
83496	84260
83114	84642
82732	85024
20 DSMA	40 DEMA
84902	84687

## SENSEX



## Bank Nifty Trader

Support	Resistance
59199	59702
58947	59953
58696	60205
20 DSMA	40 DEMA
57764	56518

## Bank Nifty



## Key Indices

Index	Target	Trend	Reversal	Support / Resistance
Nifty Auto	29800	↑	25000	25000/29800
Nifty Metal	9100	↑	11300	9100/11300
Nifty Fin Services	29000	↑	26500	26800/29000
Nifty Mid Cap 100	66000	↑	58500	58500/66000
Index	Lower Boundary	Trend	Upper Boundary	Support / Resistance
Nifty Pharma	21300	↔	23000	21300/23000
Nifty FMCG	52500	↔	57000	52500/57000
Nifty Infra	9000	↔	9700	9000/9700
Nifty Small Cap 100	17000	↔	18000	17000/18000
Nifty IT	36000	↔	38500	36000/38500

## Smart Charts

Date	Scrip Name	Action	Stop Loss/ Reversal	Buy Price/ Sell Price	Call Closing Price/ CMP	Potential % P/L at Exit/ Current	Target 1	Target 2
02 Jan 26	<b>OBEROIRLTY</b>	Buy	<b>Exit</b>	1729.00	<b>1667.00</b>	-3.59%	1816.00	1902.00

Source: Mirae Asset Sharekhan; NOTE: Kindly note that all stop losses in Smart Charts are on closing basis unless specified.; TPB: Trailing profit booked

## Momentum Swing

Date	Scrip Name	Action	Stop Loss/ Reversal	Buy Price/ Sell Price	Call Closing Price/CMP	Potential % P/L at Exit/ Current	Target 1	Target 2
12 Jan 26	<b>SBIN</b>	Buy	994.00	1014.50	<b>1015.15</b>	0.06%	1040.00	1060.00
12 Jan 26	<b>JSWSTEEL</b>	Buy	1142.00	1178.10	<b>1182.70</b>	0.39%	1215.00	1237.00
09 Jan 26	<b>MTARTECH</b>	Buy	<b>Exit</b>	2701.00	<b>2655.00</b>	-1.70%	2785.00	2845.00
08 Jan 26	<b>MUTHOOTFIN</b>	Sell	<b>Exit</b>	3817.40	<b>3865.70</b>	-1.27%	3700.00	3625.00

Source: Mirae Asset Sharekhan; NOTE: Kindly note that all stop losses in Momentum swing are on an intra-day basis.; TPB: Trailing profit booked

1) The stop loss should be placed after 9.17am in order to avoid freak trade; 2) The same will be revised in the TradeTiger terminal every day for the pop-ups

## CTFT (Carry Today For Tomorrow) Cash Only

Date	Scrip Name	Action	Stop Loss/ Reversal	Buy Price/ Sell Price	Call Closing Price/CMP	Potential % P/L at Exit/ Current	Target 1	Target 2
12 Jan 26	<b>HINDZINC</b>	Buy	615.00	625.00	<b>628.25</b>	0.52%	635.00	650.00
09 Jan 26	<b>GOKEX</b>	Buy	<b>Stopped Out</b>	783.80	<b>649.00</b>	-17.20%	662.00	668.00

Source: Mirae Asset Sharekhan; NOTE: Kindly note that all stop losses in CTFT are on an intra-day basis.; TPB: Trailing profit booked

1) The stop loss should be placed after 9.17am in order to avoid freak trade; 2) The same will be revised in the TradeTiger terminal every day for the pop-ups

**DISCLAIMER**

This information/document has been prepared by Sharekhan Ltd. and is intended for use only by the person or entity to which it is addressed to. This Document may contain confidential and/or privileged material and is not for any type of circulation, and any review, retransmission, or any other use is strictly prohibited. This information/ document is subject to change without prior notice.

Recommendation in reports based on technical and derivatives analysis is based on studying charts of a stock's price movement, trading volume, and outstanding positions, as opposed to focusing on a company's fundamentals and as such, may not match with a report on a company's fundamentals. However, this would only apply to information/documents focused on technical and derivatives research and shall not apply to reports/documents/information focused on fundamental research.

This information/document does not constitute an offer to sell or solicitation for the purchase or sale of any financial instrument or as an official confirmation of any transaction. Though disseminated to all customers who are due to receive the same, not all customers may receive this report at the same time. Mirae Asset Sharekhan will not treat recipients as customers by virtue of their receiving this information/report.

The information contained herein is obtained from publicly available data or other sources believed to be reliable, and Mirae Asset Sharekhan has not independently verified the accuracy and completeness of the said data and hence it should not be relied upon as such. While we would endeavour to update the information herein on a reasonable basis, Mirae Asset Sharekhan, its subsidiaries and associated companies, their directors, and employees ("Mirae Asset Sharekhan and affiliates") are under no obligation to update or keep the information current. Also, there may be regulatory, compliance, or other reasons that may prevent Mirae Asset Sharekhan and its affiliates from doing so. This document is prepared for assistance only and is not intended to be and must not alone be taken as the basis for an investment decision. Recipients of this report should also be aware that past performance is not necessarily a guide to future performance, and the value of investments can go down as well. The user assumes the entire risk of any use made of this information. Each recipient of this document should make such investigations as it deems necessary to arrive at an independent evaluation of an investment in the securities of companies referred to in this document (including the merits and risks involved) and should consult its own advisors to determine the merits and risks of such an investment. The investment discussed or views expressed may not be suitable for all investors. We do not undertake to advise you as to any change of our views. Affiliates of Mirae Asset Sharekhan may have issued other recommendations/ reports that are inconsistent with and reach different conclusions from the information presented in this recommendations/report.

This information/recommendation/report is not directed or intended for distribution to, or use by, any person or entity who is a citizen or resident of or located in any locality, state, country or other jurisdiction, where such distribution, publication, availability or use would be contrary to law, regulation or which would subject Mirae Asset Sharekhan and affiliates to any registration or licensing requirement within such jurisdiction. The securities described herein may or may not be eligible for sale in all jurisdictions or to a certain category of investors. Persons in whose possession this document may come are required to inform themselves of and to observe such restrictions.

The analyst certifies that the analyst might have dealt or traded directly or indirectly in the securities of the company and that all the views expressed in this document accurately reflect his or her personal views about the subject company or companies and its or their securities and do not necessarily reflect those of Mirae Asset Sharekhan. The analyst and Mirae Asset Sharekhan further certifies that either he or his relatives or Mirae Asset Sharekhan associates might have direct or indirect financial interest or might have actual or beneficial ownership of 1% or more in the securities of the company at the end of the month immediately preceding the date of publication of the research report. The analyst and Mirae Asset Sharekhan encourage independence in research report/ material preparation and strive to minimize conflict in the preparation of the research report. The analyst and Mirae Asset Sharekhan do not have any material conflict of interest or have not served as officers, directors or employees or engaged in market-making activity of the company. The analyst and Mirae Asset Sharekhan have not been a part of the team which has managed or co-managed the public offerings of the company, and no part of the analyst's compensation was, is or will be, directly or indirectly related to specific recommendations or views expressed in this document. Sharekhan Ltd, or its associates, or analysts.

have not received any compensation for investment banking, merchant banking, brokerage services or any compensation or other benefits from the subject company or from a third party in the past twelve months in connection with the research report.

Either Mirae Asset Sharekhan or its affiliates or its directors or employees/representatives/clients or their relatives may have position(s), make market, act as principal or engage in transactions of purchase or sell of securities, from time to time or may be materially interested in any of the securities or related securities referred to in this report and they may have used the information set forth herein before publication. Mirae Asset Sharekhan may from time to time solicit from, or perform investment banking or other services for, any company mentioned herein. Without limiting any of the foregoing, in no event shall Mirae Asset Sharekhan, any of its affiliates or any third party involved in, or related to, computing or compiling the information have any liability for any damages of any kind.

Forward-looking statements (if any) are provided to allow potential investors the opportunity to understand management's beliefs and opinions in respect of the future so that they may use such beliefs and opinions as one factor in evaluating an investment. These statements are not a guarantee of future performance, and undue reliance should not be placed on them. Such forward-looking statements necessarily involve known and unknown risks and uncertainties, which may cause actual performance and financial results in future periods to differ materially from any projections of future performance or results expressed or implied by such forward-looking statements. Sharekhan Ltd and its affiliates undertake no obligation to update forward-looking statements if circumstances or management's estimates or opinions should change, except as required by applicable securities laws. The reader/investors are cautioned not to place undue reliance on forward-looking statements and use their independent judgment before taking any investment decision.

Investment in securities market are subject to market risks, read all the related documents carefully before investing. The securities quoted are for illustration only and are not recommendatory. Registration granted by SEBI, and certification from NISM in no way guarantee performance of the intermediary or provide any assurance of returns to investors.

Mirae Asset Sharekhan has been ranked as India's No.1 Retail Broker by Asiamoney Brokers Poll 2023. For more details, visit [bit.ly/AsiamoneyPoll](https://bit.ly/AsiamoneyPoll)

Client should read the Risk Disclosure Document issued by SEBI & relevant exchanges and the T&C on [www.sharekhan.com](https://www.sharekhan.com)

---

Registered Office: 1st Floor, Tower No. 3, Equinox Business Park, LBS Marg, Off BKC, Kurla (West), Mumbai 400 070, Maharashtra, India. Tel: 022-67502000.

Correspondence/Administrative Office Address - Gigaplex IT Park, Unit No 1001, 10th floor, Building No.9, TTC Industrial Area, Digha, Airoli-West, Navi Mumbai - 400708. Tel: 022 61169000 / 61150000, Fax No. 61169699.

Registration and Contact Details: Name of Research Analyst - Sharekhan Limited - (AMFI-registered Mutual Fund Distributor), Research Analyst Regn No.: INH000006183. CIN: U99999MH1995PLC087498.

SEBI Regn. Nos.: BSE / NSE (CASH / F&O / CD) / MCX - Commodity: INZ000171337; BSE - 748, NSE - 10733, MCX - 56125, DP: NSDL/CDSL-IN-DP-365-2018; PMS: INP000005786; Mutual Fund: ARN 20669 (date of initial registration: 03/07/2004, and valid till 02/07/2026); IRDAI Registered Corporate Agent (Composite) License No. CA0950, valid till June 13, 2027.

Compliance Officer: Mr. Joby John Meledan; Tel: 022-4657 3809; email id: [complianceofficer@sharekhan.com](mailto:complianceofficer@sharekhan.com)

For any complaints/ grievances, email us at [igc@sharekhan.com](mailto:igc@sharekhan.com), or you may even call the Customer Service desk on 022-41523200/ 022-61151111.